



e-FISCAL

Sample Presentation of Data Analysis

Outline

- The following slides provide an illustration of how the analysis of the questionnaire data will be presented.
- The information will be processed in such a way that it will not be possible to identify the provider of any information.
- Data generated for illustration purposes - any possible similarity to real values is purely coincidental
 - Reference to questions is done only for illustration purposes

Sample



Coordination (no resources)	1
Mordor	1
Computing services(CPU, storage, etc)	15
Haradwaith	2
Mordor	4
Bay of Belfalas	2
Eriador	3
Rhovanion	2
Rohan	2
Both	10
Rhun	2
Mordor	3
Gondor	4
Eriador	1

Data generated for illustration purposes

FTEs per /1000 Cores

<i>FTEs/1000 Cores</i>	<i>2010</i>	<i>2011</i>
Min	1,025	0,217
Max	17,241	17,241
Average	4,310	3,399
Median	2,799	2,083

All sample

<i>FTEs/1000 Cores</i>	<i>2010</i>	<i>2011</i>
Min	1,025	0,217
Max	17,241	17,241
Average	5,147	4,375
Median	3,352	2,708

Only sites
Providing
computing
services

Combination of Quest. 3.1 and 6.1

Data generated for illustration purposes

Capacity utilization (measured through Wall clock months/year)



<i>Capacity utilization</i>	<i>2010</i>	<i>2011</i>
Min	19%	14%
Max	100%	100%
Average	63%	60%
Median	67%	67%

Combination of Quest. 3.1 and 3.3

Data generated for illustration purposes

Cost per core (prices for 2010 and 2011)



<i>Cost per core (€/core)</i>	<i>2010</i>	<i>2011</i>
Min	150	130
Max	560	510
Average	297	291
Median	250	210

Quest. 3.5.1 and 3.5.2

Data generated for illustration purposes

Depreciation rates

<i>Economic lives</i>	<i>CPUs</i>	<i>Tape storage</i>	<i>Disk Storage</i>
Min	3	3	3
Max	8	12	8
Average	5	7	5
Median	5	5	5

Quest. 3.6

Data generated for illustration purposes

Overall sample

<i>Overall cost breakdown</i>	
CPU depreciation	25%
Storage depreciation	14%
Interconnect equipment depr.	2%
Auxiliary equipment depr.	5%
Software costs	1%
Support contract costs	5%
Personnel costs	32%
Premises costs	8%
Electricity cost	7%
Connectivity costs	0%
Overhead costs	1%
Total	100%

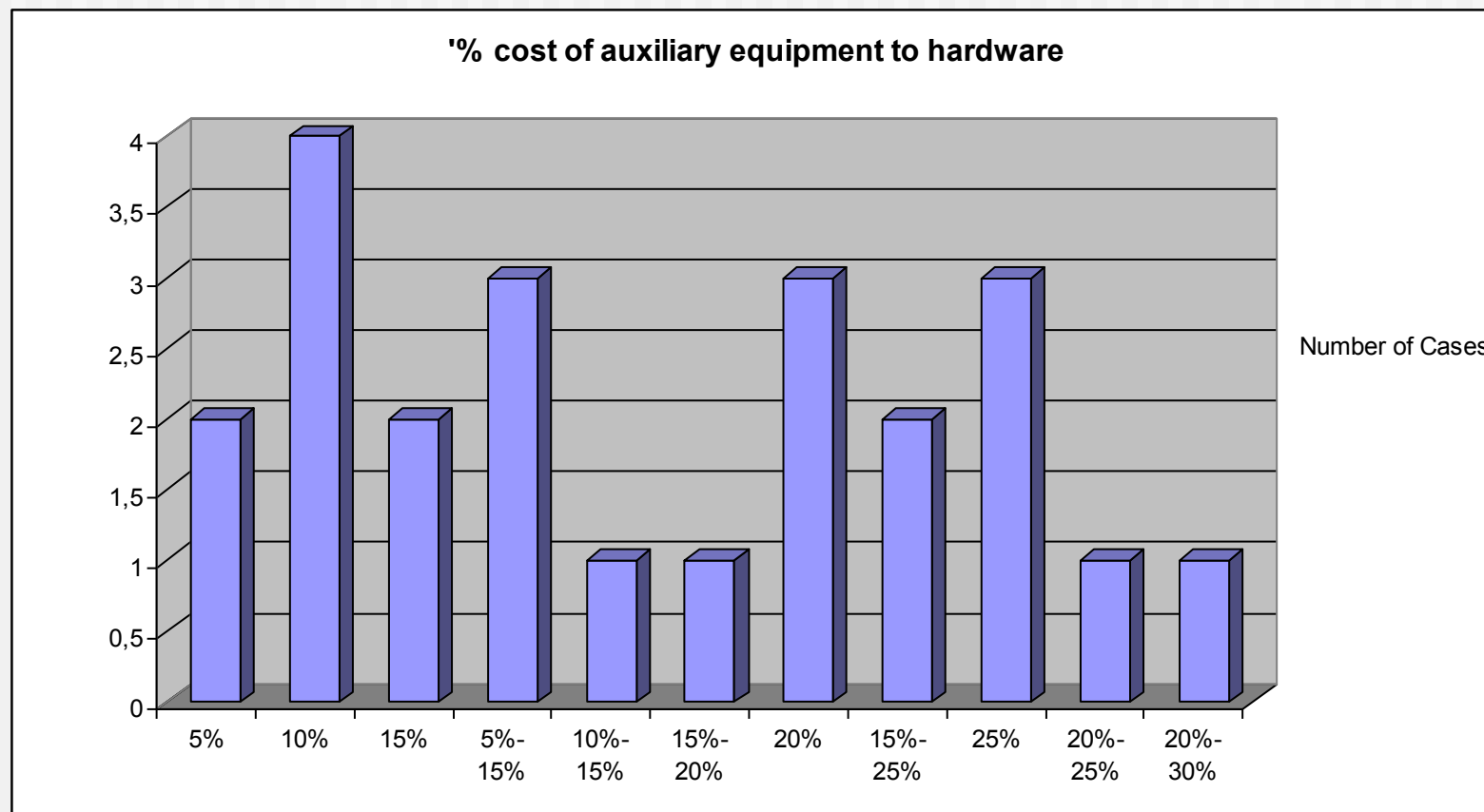
Capex = 46%

Opex = 54%

Combination of a large number of Quest.

Data generated for illustration purposes

% of auxiliary equipment cost to hardware



Quest. 4.1

Data generated for illustration purposes

Cost per logical CPU/hour

Core = Logical CPU

	<i>Cost per Logical CPU/hour</i>	<i>% utilization</i>	
€/logical CPU hour	60%	80%	90%
Min	0,065	0,052	0,045
Max	0,152	0,135	0,100

Aggregation and analysis of several questions

Data generated for illustration purposes